

Foundation Class

Foundation provides a semantic backing to the SACM Model from UML/KerML like models to make mapping (e.g. through Profiles) into UML/SysMLv1 or SysMLv2 more regular. Many of the textual entries in this section come directly from the UML 2.5.1 metamodel.

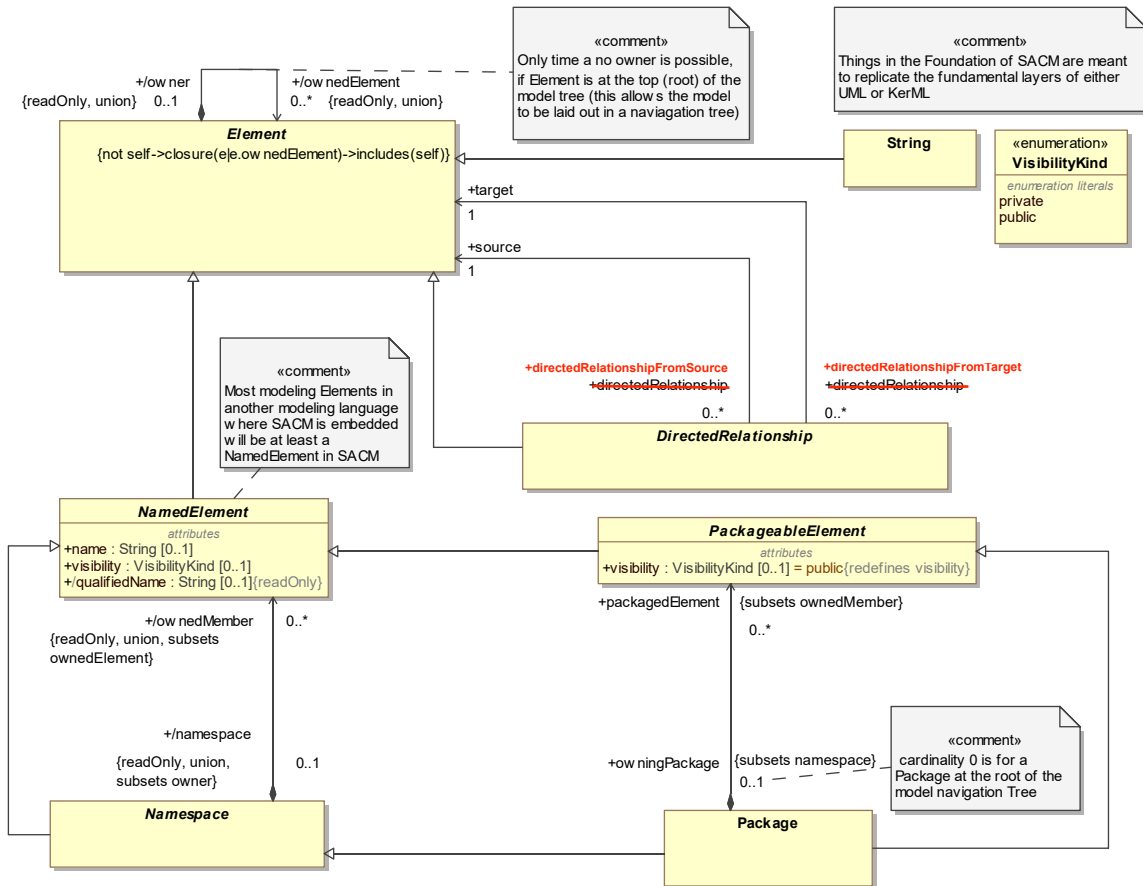


Figure 8.1 - Foundation Class

DirectedRelationship [Abstract Class]

A *DirectedRelationship* represents a relationship between a source model *Element* and target model *Element*. (This represents a more restrictive, than UML, Binary Relationship.)

Association Ends

/source : Element [1]

Specifies the source *Element* of the *DirectedRelationship*.

/target : Element [1]

Specifies the target *Element* of the *DirectedRelationship*.