


| Diagram name | Activity Diagrams |
|-------------------|-------------------|
| Author | ronnie_gill |
| Creation date | 4/1/21 11:48 AM |
| Modification date | 4/1/21 2:37 PM |

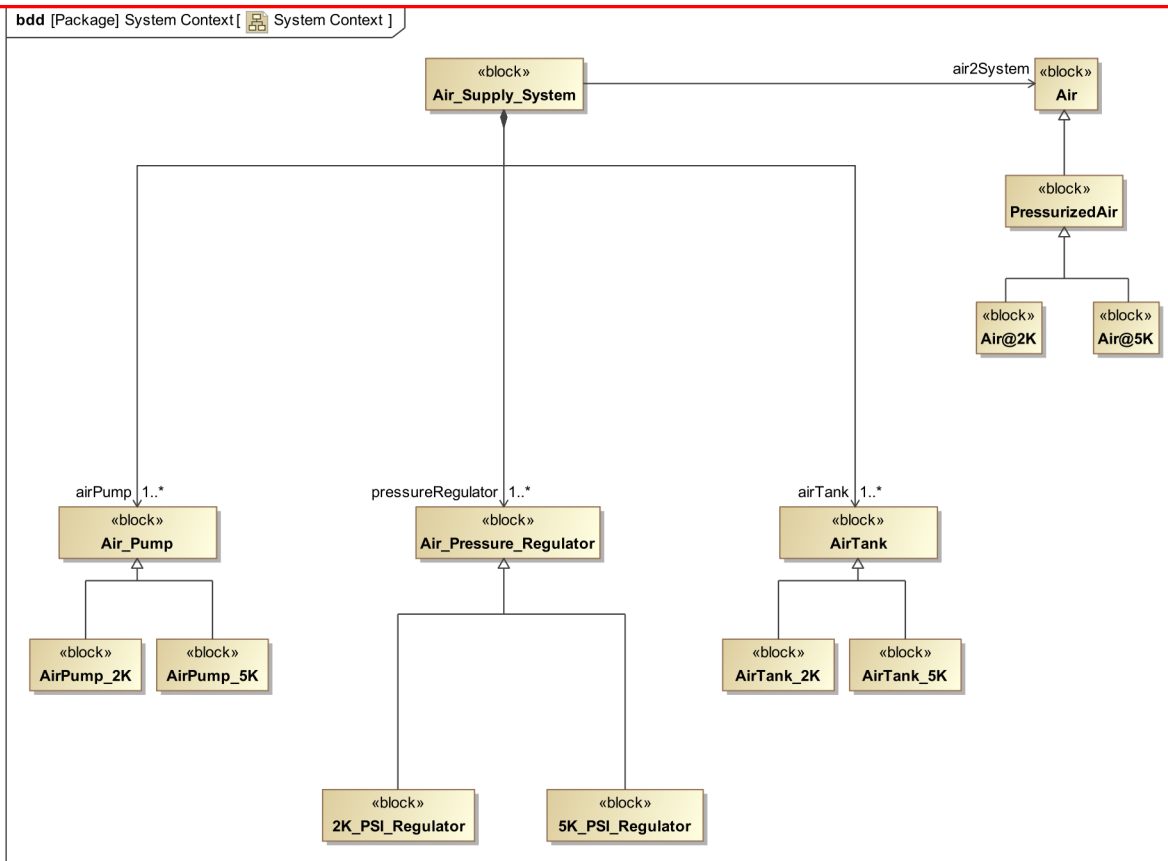
Overview:

- Showing “Conveyed information flow”  symbols on an activity diagram edge is not possible today.
- This is only possible using UML activity diagrams

Benefits of adding:

- Familiar visual Que for items & Information flowing between actions
- Reduces clutter when many actions with pins are shown
- Give a better indication of flow direction

Not possible to display “Conveyed Information”  symbol an activity diagram, in SysML today



act [Activity] Activity Diagrams [Activity Diagrams1]

| | |
|-------------------|--------------------|
| Diagram name | Activity Diagrams1 |
| Author | ronnie_gill |
| Creation date | 4/1/21 2:28 PM |
| Modification date | 4/1/21 3:10 PM |

UML in this example – Would like to use “Conveyed Information Flows” with SysML diagram also

in : Air

AirIn

: Compressing
Air

AirOut : Air

Air@2K.PressedAirOut:PressrizedAir

Air

AirInTank : Air

StoreAir@Press
: Storing Air

Summary:

- **OwningBlock.Name:Type** - Element flowing on object edge (Generalization Use case)
- **Name:Type** – (Matching Pins Use Case, with additional block properties)

bdd [Package] System Context [AirConstraints]

«block»

Air

constraints

Temp > 20
Rel_humity < 0.40

values

StdTemp : °C = 23.0
NominalPress : pressure[pascal] = 9.987 Pa {unit = pascal}

bdd [Package] System Context [Air@2K]

«block»

Air@2K

constraints

^Temp > 20
^Rel_humity < 0.40
hiPressLmt < 2000
lowPressLmt > 1500

flow properties

in stdAirIn : Air

out pressedAirOut : PressurizedAir

values

^StdTemp : °C = 23.0
^NominalPress : pressure[pascal] = 9.987 Pa {unit = pascal}

Example with UAF Diagram shown

